



Peel District School Board

Special Education Programs and Supports

2010-2011

PEEL DISTRICT SCHOOL BOARD SPECIAL EDUCATION AMENDMENTS 2010-2011

CONTENTS

A	The Board's Consultation Process	
	Summary of Consultation	2009-2010
	Results of Internal and External Reviews	2009-2010
	Summary of Allocations	
	Elementary Teachers	
	Secondary Teachers	
	Teaching Assistants	
	Professional Support Services	
	Class Locations	2010-2011
	Reviews Planned	2010-2011
B	Special Education Staff	
	Staff Development	
	Transportation	

A. Special Education Support Services 2009-2010

Consultation Process

Standards produced by the Ministry of Education for the development of a Special Education Plan include an expectation that stakeholders will be consulted with regards to programs and services offered annually.

System consultation was elicited through:

- SEAC meetings representing twelve associations
- Review of staffing needs with superintendents, Special Education Resource Teachers, Secondary Resource Teachers-Special Education and Secondary Special Education Department heads with special education responsibilities

The goal of the consultation process was to understand concerns and garner suggestions from the different associations represented by SEAC.

The results of annual consultation and internal reviews are considered in the on-going work of the review of the full special education delivery model.

Results of the Internal and External Reviews 2009-2010

Enhanced Learning Programs and Services

- This review has been completed. Work teams are reviewing the recommendations.
- The Behaviour Services Review is ongoing.

Summary of Special Education Programs and Services 2010-2011

- Special education program teacher allocation
- Allocation of teaching assistants
- Professional support services
- Summary of special education programs by location-elementary
- Summary of special education programs by location-secondary

SUMMARY OF SPECIAL EDUCATION PROGRAM TEACHER ALLOCATIONS

ELEMENTARY PROGRAMS CONTAINED	2009-2010 FTE	2010-2011 FTE
BEHAVIOUR	20	17
COMMUNICATION	57	59
DEVELOPMENTAL DISABILITIES	23	22
DEVELOPMENTAL DISABILITIES/SPECIAL NEEDS/ASD	10	13
ENHANCED LEARNING	23	22
GENERAL LEARNING DISABILITY	55	54
HARD OF HEARING	3	3
KINDERGARTEN SUPPORT PROGRAM	1.5	2.5
KINDERGARTEN TRANSITION LANGUAGE PROGRAM	3.5	4.5
PRIMARY TRANSITION PROGRAM	5	7
REGIONAL ASD	27	28
CARE AND/OR TREATMENT PROGRAMS, CUSTODY AND CORRECTIONAL FACILITIES	10	10
TOTAL FTE	238.0	242.0

ELEMENTARY PROGRAMS NON-CONTAINED

	2009-2010 FTE	2010-2011 FTE
IN-SCHOOL SUPPORT PROGRAM		
IN-SCHOOL ENHANCED LEARNING	387.3	387.3
PROGRAM INTERMEDIATE CONTACT PROGRAM(2009-2010)	6.0	13.5
ITINERANT TEACHERS ASD Resource Team Hard of Hearing Mobile Team (behaviour) Special Needs Visually Impaired	39.5	39.5
Total FTE	432.8	440.3

SUMMARY OF SECONDARY ALLOCATIONS - STAFF (FTE)

Secondary Programs	2009-2010 FTE	2010-2011 FTE
Care and/or Treatment Program, Custody and Correctional Facility	45.0	45.0
LEARNING SUPPORT	61.5	60.17
SECONDARY - DEVELOPMENTAL DISABILITIES	74.66	76.0
DISTRICT DEVELOPMENTAL DISABILITIES	--	11.0
SECONDARY REGIONAL DD-RESOURCE – (Developmental Disabilities)	2.66	5.67
SECONDARY REGIONAL ASD-RESOURCE – (Autism Spectrum Disorder)	12.33	17
SECONDARY Vocational Level 1	29.0	29.15
SECONDARY ITINERANT- Autism Spectrum Disorder, Hard of Hearing, Special Needs (ASD, HOH, SN)	4.0	4.0
SECONDARY REGIONAL COMMUNICATION – Learning Disability	10.0	9.33
SECONDARY SCHOOL In-School Support/Behaviour Resource	57.5	60.17
SECONDARY SCHOOL Itinerant Behaviour	2.0	2.0
TOTAL FTE	297.65	309.49

TEACHING ASSISTANT ALLOCATIONS

SPECIAL PROGRAMS ALLOCATIONS	ELEMENTARY		SECONDARY	
	2009-10	2010-11	2009-10	2010-11
Elementary Special Education Programs Communication and GLD	56.5	54.0	-	-
Integrated	470.5	529.0	57.0	66.5
Hard of Hearing Contained Programs	3.0	3.0	-	-
Regional Special Programs – A.S.D.	72.0	78.0	32.0	47.0
Secondary Regional DD-Resource	-	-	6.0	35.0
Regional Special Programs -- Developmental Disabilities and Vocational 1	106	109.0	190.5	173.0
Secondary Regional Communication Programs	-	-	5.0	5.0
Technical Assistant	3.0	3.0	-	-
Care and/or Treatment Programs, Custody and Correctional Facilities	6.0	6.0	8.0	9.0
Roy McMurtry	-	-	14	14
TOTAL	717.0	782.0	312.5	349.5

TEACHING ASSISTANT ALLOCATIONS

BEHAVIOUR ALLOCATIONS	ELEMENTARY		SECONDARY	
	2009-2010	2010-2011	2009-2010	2010-2011
Elementary Contained Programs	23.0	22	-	-
School Based Elementary BTAs	152.5	155.5		
Itinerants	-	-	16.5	16.5
Mobile Behaviour Services	8.0	8.0	8.0	8.0
Secondary Schools	-	-	31.0	32.0
TOTAL Behaviour	183.5	185.5	55.5	56.5

TOTAL NUMBER OF TEACHING ASSISTANT ALLOCATIONS	
2004-2005	944.5
2005-2006	1011
2006-2007 Added in fall 2006 -15	1036 1051
2007-2008 Added in December 2007 - 25	1071 1096
2008-2009 includes Roy McMurtry	1147 1161
2009-2010	1268.5
2010-2011	1373.50

PROFESSIONAL SUPPORT SERVICES

EDUCATIONAL SPEECH AND LANGUAGE PATHOLOGY SERVICES

The primary aim of speech and language services is to improve a student's educational success by focusing on academic programming and communication in the classroom. To this end speech and language services provide a spectrum of integrated communication programs to support students who are communicatively challenged.

The services assist students whose language, speech, voice or hearing is delayed or disordered. Intervention is provided through assessments and individual, group and classroom programs as well as consultations with teachers, parents and community agencies. Workshops are available to parents and school staff.

Speech-Language Pathologists (does not include Chief Speech and Language Pathologist)	2009-2010 51.0	2010-2011 52.0*
---	---------------------------------	----------------------------------

PSYCHOEDUCATIONAL SERVICES

Service for students with learning or behavioural needs range from individual psychoeducational assessment to consultation with teacher and teacher assistants regarding programming and behaviour management strategies. Psychoeducational Consultants also provide emergency counselling and liaison with community services.

Psychoeducational Consultants (does not include Chief Psychologist, Senior Psychology Associate, Coordinator of Behaviour Programs)	2009-2010 60.0	2010-2011 60.0*
---	---------------------------------	----------------------------------

SCHOOL SOCIAL WORK SERVICES

School Social Work Services are available to assist students whose attendance and/or social-emotional adjustment has been impacted by personal, social or family difficulties. Social workers assist schools in identifying and helping to correct those obstacles which interfere with students' ability to benefit from the educational opportunities available to them. School Social Work Services include assessment and counselling of students and parents, mandated attendance and S.A.L.E.P. responsibilities, crisis intervention, consultation, community liaison, Reaching Out and Learning to 18 initiatives.

Social Workers (does not include Chief Social Worker)	2009-2010 56.0	2010-2011 57.0*
---	---------------------------------	----------------------------------

*Includes Alternative Programs, Hubs and Urban Funding

ELEMENTARY CONTAINED CLASS LOCATIONS 2010-2011

Enhanced Learning Classes (ELC)

		Class	School	Allocation	Maximum Enrolment
NFO	Bent	IELC	Greenbriar	2	50
NFO	deFreitas				
NFO	Massey	PELC	Caledon East	1	20
		JELC	Caledon East	1	23
		IELC	Caledon East	1	25
		IELC	Allan Drive	1	25
NFO	Haarmann	JELC	Somerset	1	23
		JELC	Conestoga	1	23
		IELC	R.H. Lagerquist	1	25
NFO	Mason	PELC	Helen Wilson	1	20
		JELC	Helen Wilson	1	23
MWFO	Miles	PELC	Edenrose	1	20
		JELC	Edenrose	1	23
		IELC	Dolphin	2	50
MWFO	Sirisko	JELC	Thorn Lodge	2	46
		IELC	Homelands	2	50
SFO	Gingell	JELC	Silverthorn	1	23
SFO	Dowling	IELC	Camilla	2	50
Total				22	519

Relocate:

Reallocate:

JELC Lyndwood to Silverthorn	IELC Lyndwood to ICOM Hillcrest
IELC Lyndwood to Camilla	

**Elementary Contained Behaviour Classes (BEH),
Primary Interval (PINT), Junior Interval (JINT), Intermediate Contact(ICON)**

		Class	School	Allocation	Maximum Enrolment
NFO	Bent	PINT	Eastbourne	1	8
		JINT	Jefferson	1	8
NFO	deFreitas	JINT	Levi Creek	1	8
		PINT	McHugh	1	8
NFO	Massey	JINT	Caledon East	1	8
NFO	Haarmann	JINT	Kingswood	1	8
		ICON	McCrimmon	1	8
		ICON	Sir John A. Macdonald	1	8
NFO	Mason	PINT	H.F.Loughlin	1	8
		JINT	Arnott Charlton	1	8
		JINT	Springdale	1	8
MWFO	Miles	JINT	Miller's Grove	1	8
MWFO	Sirisko	PINT	McKinnon	1	8
		JINT	Springfield	1	8
		ICON	Homelands	1	8
SFO	Gingell	PINT	Silverthorn	1	8
SFO	Dowling	JINT	Munden Park	1	8
Total				17	136

Relocate:

Reallocate:

	Staff to Contact Programs at middle schools from:
	ICON-Fallingbrook
	ICON-Riverside
	ICON-Morning Star

Elementary Contained General Learning Disability Classes (GLD)

		Class	School	Allocation	Maximum Enrolment
NFO	Bent	JGLD	Claireville	1	14
		JGLD	Eastbourne	1	14
		JGLD	Brandon Gate	1	14
		IGLD	Darcel	2	28
		IGLD	Earnscliffe	1	14
		IGLD	Greenbriar	1	14
		IGLD	Calderstone	1	14
NFO	deFreitas	PGLD	McHugh	1	10
		JGLD	McHugh	1	14
		IGLD	Beatty Fleming	1	14
		IGLD	Centennial	1	14
NFO	Massey	PGLD	R. J. Lee	1	10
		JGLD	R. J. Lee	1	14
		JGLD	Treeline	1	14
		IGLD	Treeline	1	14
		IGLD	Herb Campbell	1	14
		IGLD	Mountain Ash	1	14
NFO	Haarmann	PGLD	Burnt Elm	1	10
		JGLD	Burnt Elm	1	14
		JGLD	Sir Winston Churchill	1	14
		IGLD	Cheyne	1	14
		IGLD	McCrimmon	1	14
		IGLD	Royal Orchard	1	14
		IGLD	Sir John A. Macdonald	1	14
NFO	Mason	PGLD	R. D. Barber	1	10
		JGLD	R. D. Barber	1	14
		JGLD	Parkway	1	14
		IGLD	Balmoral	1	14
		IGLD	Gordon Graydon	1	14
		IGLD	Williams Parkway	1	14
MWFO	Miles	PGLD	Ray Underhill	1	10
		JGLD	Ray Underhill	1	14
		JGLD	Osprey Wood	1	14
		IGLD	Dolphin	1	14
		IGLD	Fallingbrook	2	28
MWFO	Sirisko	PGLD	Kings Masting	1	10
		JGLD	Churchill Meadows	1	14
		JGLD	Queenston	1	14
		IGLD	Erin Centre	1	14
		IGLD	Erin Mills	1	14
		IGLD	Queenston	1	14

Elementary Contained General Learning Disability Classes (GLD) cont'd

SFO	Gingell	PGLD	Barondale	1	10
		JGLD	Barondale	1	14
		JGLD	Cooksville Creek	1	14
		IGLD	A. A. Martin	1	14
		IGLD	Bristol Road	1	14
		IGLD	Glenhaven	1	14
		IGLD	The Valleys	1	14
SFO	Dowling	PGLD	Elmcrest	1	10
		JGLD	Elmcrest	1	14
		IGLD	Camilla	1	14
		IGLD	Hillside	1	14
Total				54	724

Relocate:

Reallocate:

	PGLD Brandon Gate to IGLD Darcel
	IGLD Green Glade to JCOM Clifton

Elementary Contained Communication Classes (COM)

		Class	School	Allocation	Maximum Enrolment
NFO	Bent	PCOM	Eastbourne	1	8
		JCOM	Eastbourne	1	8
		JCOM	Brandon Gate	1	8
		ICOM	Earnscliffe	1	8
		ICOM	Morning Star	2	16
NFO	deFreitas	PCOM	Ridgeview	1	8
		JCOM	Ridgeview	1	8
		ICOM	David Leeder	2	16
		ICOM	Fletcher's Creek	2	16
NFO	Massey	PCOM	Macville	1	8
		JCOM	Macville	2	16
		ICOM	Macville	1	8
		JCOM	Treeline	1	8
		ICOM	Allan Drive	2	16
NFO	Haarmann	PCOM	Westervelts Corners	1	8
		JCOM	Westervelts Corners	1	8
		JCOM	Homestead	1	8
		JCOM	Terry Fox	1	8
		ICOM	Royal Orchard	3	24
		ICOM	R.H. Lagerquist	1	8
NFO	Mason	PCOM	Great Lakes	1	8
		JCOM	Aloma	1	8
		JCOM	Great Lakes	1	8
		ICOM	Great Lakes	1	8
		ICOM	Lougheed	1	8
MWFO	Miles	PCOM	Plowman's	2	16
		JCOM	Plowman's	2	16
		JCOM	Willow Way	2	16
		ICOM	Edenwood	1	8
		ICOM	Dolphin	2	16
MWFO	Sirisko	PCOM	Pheasant Run	1	8
		JCOM	Pheasant Run	1	8
		JCOM	McKinnon	1	8
		ICOM	Erin Mills	2	16

Elementary Contained Communication Classes (COM) (con't)

SFO	Gingell	PCOM	Cooksville Creek	1	8
		JCOM	Cooksville Creek	1	8
		PCOM	Hartsdale	1	8
		JCOM	Hartsdale	1	8
		ICOM	Bristol Road	2	16
SFO	Dowling	PCOM	Willow Glen	1	8
		JCOM	Willow Glen	2	16
		PCOM	Clifton	1	8
		JCOM	Clifton	1	8
		ICOM	Hillcrest	2	16
Total				59	104

Relocate:

Reallocate:

JCOM Terry Fox to Westervelts	JCOM Macville to ICOM Macville
ICOM Lougheed to Great Lakes	ICOM Hillcrest to JCOM Willow Glen
PCOM Lyndwood to Hartsdale	
JCOM Lyndwood to Hartsdale	
ICOM Lyndwood (2) to Bristol Road (2)	
PCOM Hillcrest to Willow Glen	
JCOM Hillcrest to Willow Glen	

**Elementary Contained Developmental Disabilities (DD)
Developmental Disabilities/Special Needs (DD/SN)
Developmental Disabilities/Autism Spectrum Disorder (DD/ASD)**

		Class	School	Allocation	Maximum Enrolment
NFO	Bent	P/J DD	Claireville	1	10
		P/J DD	Red Willow	1	10
		I DD	Greenbriar	1	10
NFO	deFreitas	P/J DD	Huttonville	1	10
		I DD	Centennial	1	10
NFO	Massey	P/J DD	R. J. Lee	1	10
		J/I DD	Caledon Central	1	10
NFO	Haarmann	P/J DD/SN	Esker Lake	1	6
		P/J DD	Brisdale	1	10
		I DD/SN	Sir Winston Churchill	1	6
		I DD/ASD	McCrimmon	1	6
MWFO	Miles	P/J DD	Shelter Bay	1	10
		I DD	Hazel McCallion	1	10
		I DD/ASD	Hazel McCallion	1	6
NFO	Mason	P/J DD/SN	Sir Wilfred Laurier	1	6
		P/J DD/ASD	Carberry	1	6
		I DD	Balmoral	1	10
		I DD	Gordon Graydon	1	10
		I DD	Lougheed	1	10
		I DD/ASD	Lougheed	1	6
		I/DD/ASD	Williams Parkway	1	6
MWFO	Sirisko	P/J DD	Artesian	1	10
		I DD/SN	Erin Centre	1	6
		I DD	Ruth Thompson	1	10
		I DD	Thomas Street	1	10
SFO	Gingell	P/J DD	Nahani Way	1	10
		P/J DD	Champlain Trail	1	10
		P/J DD/SN	Briarwood	1	6
		P/JDD/ASD	Dixie	1	6
		I DD	Bristol Road	1	10
		I DD	Fairwind	1	10
		I DD/ASD	Tomken Rd	1	6
SFO	Dowling	P/J DD/SN	Garthwood	1	6
		I DD	Queen Elizabeth	1	10
		I DD	Riverside	1	10
Total				35	298

Relocate:

Reallocate:

New:

I DD Lisgar to Riverside	P/J DD Ashgrove to P/J DD/SN Briarwood	I DD/ASD Lougheed
		I DD/ASD Williams Parkway

**Elementary Regional Contained Special Programs,
Communications Autism Spectrum Disorder (ASD) Primary Transition Program (PTP)**

		Class	School	Allocation	Enrolment
NFO	Bent	P/J ASD	Red Willow	1	6
		I/ASD-R	Greenbriar	1	8
NFO	deFreitas	P/J ASD	Cherry Tree	1	6
		I/ASD-R	David Leeder	1	8
		PTP	Derry West	1	6
NFO	Massey	J/ASD-R	Robert J. Lee	1	6
		I/ASD	Mountain Ash	1	8
NFO	Haarmann	P/J ASD	Burnt Elm	1	6
		P/J ASD	Terry Fox	1	6
		P/J ASD	Conestoga	1	6
		I/ASD	Sir John A Macdonald	1	8
		I/ASD	Royal Orchard	1	8
		I/ASD-R	R.H. Lagerquist	1	8
		PTP	Esker Lake	1	6
		PTP	Conestoga	1	6
MWFO	Miles	P/J ASD	Britannia	1	6
		I/ASD	Hazel McCallion	1	8
		PTP	Britannia	1	6
NFO	Mason	I/ASD	Williams Parkway	1	8
		PTP	Helen Wilson	1	6
MWFO	Sirisko	P/J ASD	Castlebridge	1	6
		P/J ASD	Middlebury	1	6
		P/J ASD	Sawmill Valley	1	6
		P/J ASD	Thorn Lodge	1	6
		I/ASD	Queenston	1	8
		I/ASD	Thomas Street	1	8
		I/ASD-R	Ruth Thompson	1	8
		I/ASD-R	Homelands	1	8
		PTP	Castlebridge	1	6
		PTP	Sawmill Valley	1	6
SFO	Gingell	P/J ASD	Hartsdale	1	6
		P/J ASD	Huntington Ridge	1	6
		P/J ASD	Thornwood	1	8
		I/ASD	Tomken Road	1	8
SFO	Dowling	I/ASD	Camilla	1	8
Total		ASD		28	196
Total		PTP		7	42

New:

New:

PTP Castlebridge	P/J ASD Thornwood
PTP Esker Lake	

**Elementary Kindergarten Transition Language Class (KTLC)
Kindergarten Support Program (KSP)**

		Class	School	Allocation	Maximum Enrolment
NFO	Bent	KTLC	Eastbourne	1	12
NFO	deFreitas	KSP	Queen Street full day learning	1	6
NFO	Massey				
NFO	Haarmann	KTLC	Westervelts Corners	1	12
NFO	Mason				
MWFO	Miles	KSP	Trelawny Plowman's Park full day learning	.5	6
		KTLC		2	12
MWFO	Sirisko				
SFO	Gingell				
SFO	Dowling	KSP	Elmcrest full day learning Clifton	1	6
		KTLC		.5	6
Total		KSP		2.5	18
Total		KTLC		4.5	42

Relocate:

Reallocate:

KTLC Hillcrest to Clifton	

Hard of Hearing (HOH)

		Class	School	Allocation	Maximum Enrolment
NFO	Bent				
NFO	deFreitas				
NFO	Massey				
NFO	Haarmann				
NFO	Mason	HOH HOH	Great Lakes William G. Davis	1 1	8 8
MWFO	Miles				
MWFO	Sirisko				
SFO	Gingell	HOH	Cooksville Creek	1	8
SFO	Dowling				
Total				3	24

Care and/or Treatment Programs, Custody and Correctional Facilities (Section 23)

		Agency	School	Allocation	Maximum Enrolment
NFO	Bent	TRE-ADD	Fallingdale	1	6
NFO	deFreitas	Spectrum Spectrum	Beatty-Fleming Centennial Sr.	1 1	6 6
NFO	Massey			0	0
NFO	Haarmann	Cornerstone	Sir Winston Churchill	1	6
NFO	Mason	ErinoakKids	Massey Street	1	6
MWFO	Miles	ErinoakKids	Edenrose	2	12
MWFO	Sirisko			0	0
SFO	Gingell	PCC PCC	Glenhaven Westacres	1 2	6 12
SFO	Dowling				
Total				10	60

Intermediate Contact Program (ICP)

			School	Allocation
NFO	Bent		Calderstone	.5
		*	Earncliffe	.5
			Morning Star	.5
NFO	deFreitas		David Leeder	.5
		*	Centennial Senior	.5
		*	Fletcher's Creek	.5
NFO	Massey	*	Allan Drive	.5
		*	Mountain Ash	.5
			Sunny View	.5
NFO	Haarmann	*	Cheyne	.5
			McCrimmon	.5
		*	R. H. Lagerquist	.5
		*	Sir John A. Macdonald	.5
NFO	Mason	*	Balmoral Drive	.5
		*	Lougheed Middle	.5
		*	William G. Davis	.5
MWFO	Miles		Edenwood	.5
			Fallingbrook	.5
			Hazel McCallion	.5
		*	Lisgar Middle	.5
MWFO	Sirisko	*	Erin Centre Middle	.5
		*	Ruth Thompson Middle	.5
			Thomas Street	.5
SFO	Gingell	*	A. A. Martin	.5
			Fairwind	.5
			Tomken Road	.5
SFO	Dowling	*	Camilla Road	.5
Total				13.5

* The Behaviour Contact Program Phase 2

In-School Enhanced (ISELP) and In-School Support Programs (ISSP)

NFO	Bent	45.2
NFO	DeFreitas	45.2
NFO	Haarmann	47.8
NFO	Massey	47.8
NFO	Mason	40.9
MWFO	Miles	43.1
MWFO	Sirisko	43.0
SFO	Gingell	40.4
SFO	Dowling	33.9
TOTAL		387.3

SECONDARY PROGRAMS

Secondary Learning Support Program LS 1 LS 2

Superintendent		School	Allocation 2009-2010 FTE	Allocation 2010-2011 FTE
NFO	Courtin	Bramalea	2.17	2.33
		Brampton Centennial	3.33	3.33
		Central Peel	2.00	2.33
		Lincoln Alexander	1.50	1.33
		Mississauga	1.83	2.17
		North Park	2.17	1.83
		Turner Fenton	1.50	1.17
NFO	Powidajko	Chinguacousy	2.17	1.83
		Fletchers Meadow	3.67	3.33
		Harold M. Brathwaite	2.33	2.00
		Heart Lake	3.17	3.17
		Humberview	2.83	2.67
		Mayfield	2.33	2.50
		Judith Nyman	-	-
		Sandalwood Heights	2.50	2.33
		Louise Arbour	-	1.17
MWFO	Speers	Erindale	3.00	2.83
		John Fraser	1.67	1.50
		Meadowvale	3.00	2.83
		Rick Hansen	2.33	2.33
		Stephen Lewis	1.50	1.50
		Streetsville	1.50	1.50
		West Credit	-	-
		Woodlands	1.33	1.33
SFO	Edwards	Applewood Heights	2.00	1.67
		Cawthra Park	1.50	1.83
		Clarkson	2.17	2.17
		Glenforest	1.17	1.17
		Gordon Graydon	1.00	0.67
		Lorne Park	2.00	1.67
		Port Credit	2.33	2.33
		T.L. Kennedy	1.50	1.33
Total FTE			61.50	60.17

Secondary In School Support (ZIS)/ Contact (CON)

Superintendent		School	Allocation 2009-2010 FTE	Allocation 2010-2011 FTE
NFO	Courtin	Bramalea	1.50	1.50
		Brampton Centennial	1.67	1.67
		Central Peel	1.50	1.50
		Lincoln Alexander	2.67	2.67
		Mississauga	1.50	1.50
		North Park	1.50	1.67
		Turner Fenton	2.67	2.67
NFO	Powidajko	Chinguacousy	1.67	1.67
		Fletchers Meadow	1.50	1.50
		Harold M. Brathwaite	1.50	1.50
		Heart Lake	1.67	1.67
		Humberview	1.67	1.67
		Mayfield	1.67	1.67
		Judith Nyman	3.83	3.83
		Sandalwood Heights	1.50	1.50
	Louise Arbour	-	2.00	
MWFO	Speers	Erindale	1.67	1.67
		John Fraser	1.50	1.50
		Meadowvale	1.50	1.50
		Rick Hansen	1.50	1.50
		Stephen Lewis	1.50	1.50
		Streetsville	1.50	1.50
		West Credit	3.17	3.17
		Woodlands	2.83	2.83
SFO	Edwards	Applewood Heights	1.50	1.50
		Cawthra Park	1.50	1.50
		Clarkson	1.50	1.50
		Glenforest	1.83	1.83
		Gordon Graydon	2.83	2.83
		Lorne Park	2.17	2.17
		Port Credit	1.50	1.50
		T. L. Kennedy	1.50	2.00
Total FTE			57.50	60.17

Secondary Regional Communication Program

Superintendent		School	Allocation	Allocation
			2009-2010 FTE	2010-2011 FTE
NFO	Courtin	Brampton Centennial	2.0	2.0
NFO	Powidajko	Chinguacousy	2.0	1.33
		Mayfield	2.0	2.0
MWFO	Speers	Erindale	2.0	2.0
SFO	Edwards	Gordon Graydon	2.0	2.0
TOTAL FTE			10	9.33

Secondary Vocational Level 1 Program

Superintendent		School	Positions from Special Education 2009-2010 FTE	Projected Total from Special Education 2010-2011 FTE
NFO	Courtin	Lincoln Alexander	2.83	2.83
NFO	Courtin	Turner Fenton	2.83	2.66
NFO	Powidajko	Judith Nyman	11.00	10.83
MWFO	Speers	West Credit	9.33	10.00
SFO	Edwards	Gordon Graydon	3.83	2.83
TOTAL FTE			29.00	29.15

Secondary Itinerants

Superintendent	Allocation	Allocation
	2009-2010 FTE	2010-2011 FTE
Krutila	6.0	6.0
Total FTE	6.0	6.0

Secondary ASD Resource Program

Superintendent		School	Allocation	Allocation
			2009-2010 FTE	2010-2011 FTE
NFO	Courtin	Lincoln Alexander	1.67	1.67
		Mississauga	1.67	1.67
		North Park	-	1.67
NFO	Powidajko	Chinguacousy	1.67	1.67
		Judith Nyman	2.00	2.67
MWFO	Speers	Streetsville	1.67	1.67
		West Credit	2.67	2.67
SFO	Edwards	Gordon Graydon	1.67	3.33
TOTAL FTE			13.00	17.00

Secondary Developmental Disabilities Programs

Superintendent	Location	Home School	Allocation 2009-2010 FTE	Allocation 2010-2011 FTE
Debra Krutila	Applewood		13	12
	Applewood Heights	Applewood	1	1
	Applewood Acres	Applewood	5	
	Clarkson	Applewood	1	1
	John Fraser	Applewood	1	1
	Meadowvale	Applewood	1	1
	Port Credit	Applewood	1	1
	Rick Hansen	Applewood	2	2
	The Woodlands	Applewood	1	1
	Stephen Lewis	Applewood	2	2
Debra Krutila	Parkholme		16	15
	Bramalea	Parkholme	1	1
	Brampton Centennial	Parkholme	1	1
	Central Peel	Parkholme	3	4
	Chinguacousy	Parkholme	1	1
	Heart Lake	Parkholme	1	1
	Mayfield	Parkholme	2	2
	North Park	Parkholme	1	1
	Lincoln Alexander	Parkholme	1	0
	Sandalwood Heights	Parkholme	1	1
TOTAL CLASSES			56.0	49.0
TOTAL TEACHERS			74.66	66.0

Secondary DD Program

Superintendent	Location	Allocation 2009-2010 FTE	Allocation 2010-2011 FTE
Krutila	Applewood	37.33	30
Krutila	Parkholme	37.33	36
Total FTE		74.66	66

District DD Program

Superintendent	Location	Allocation 2009-2010 FTE	Allocation 2010-2011 FTE
Edwards	T.L. Kennedy	-	11.00
Courtin	Lincoln Alexander	-	1.67
Total FTE		-	12.67

Secondary DD Resource Program

Superintendent	Location	Allocation 2009-2010 FTE	Allocation 2010-2011 FTE
Powodajko	Harold M. Brathwaite	1.33	1.33
	Louise Arbour	-	1.33
Speers	Erindale	1.33	1.33
Total FTE		2.66	3.99

Secondary School Enhanced Learning Centres

Superintendent		School	2009-2010	2010-2011
NFO	Powidajko	Heart Lake	Grade 9-12	Grade 9-12
		Humberview	Grade 9-12	Grade 9-12
MWFO	Speers	Woodlands	Grade 9-12	Grade 9-12
SFO	Edwards	Glenforest	Grade 9-12	Grade 9-12
		Lorne Park	Grade 9-12	Grade 9-12

Care and/or Treatment Program, Custody and Correctional Facility (Section 23)

Superintendent		Agency	School	2009-2010 FTE	2010-2011 FTE
NFO	Powidajko	TRE-ADD	H.M. Brathwaite	1	1
		Hanrahan	H.M. Brathwaite	1	1
		Spectrum	Chinguacousy	1	1
NFO	Courtin	AYS	Bramalea	1	1
		Cornerstone	North Park	1	1
		AYS	Brampton Centennial	1	1
		Marjorie Amos House	Brampton Centennial	1	1
		Full Circle	Central Peel	1	1
		Cuthbert House	Turner Fenton	1	1
		Wm. Osler Health Centre	Mayfield	3	3
		MCYS-Youth Justice	Roy McMurtry	30	30
SFO	Edwards	Peel Children's Centre	Glenforest	1	1
MWFO	Speers	Alliance	West Credit	1	1
		Johnson Children's Services	Rick Hansen	1	1
Total FTE				45	45

Reviews Planned for 2010-2011

- Behaviour Program Review

Projects Planned for 2010-2011

- Inclusion
- Transitions Plans- Professional Development
- Early Literacy Intervention Pilot Project
- ErinoakKids-Connections for Students: Supporting Seamless Transitions for Students with ASD from the Autism Spectrum Intervention Program to School.

11. Elementary Panel

Special Education Staff	FTE 2009-2010	FTE 2010-2011	Staff Qualifications
1. Teachers of exceptional students			
1.1 Teachers for resource-withdrawal programs	389.7	387.3	OTQRC + Minimum Sp.Ed. Part I
1.2 Teachers for self-contained classes	265.1	232	OTQRC + Minimum Sp.Ed. Part I
1.3 Teachers for Care and/or Treatment Programs, Custody and Correctional Facilities	10	10	OTQRC
2. Other special education teachers			
2.1 Itinerant teachers	39.5	41.5	<u>ASD/SN</u> -OTQRC + Minimum Sp.Ed. Part I <u>Deaf/Hard of Hearing</u> - OTQRC + Minimum Part 1 Specialist in Deaf Education <u>Blind/Low Vision</u> - OTQRC + Minimum Part 1 in Blind/Low Vision Education
2.2 Teacher diagnosticians	0	0	
2.3 Coordinators	1.0	2.0	OTQRC + Sp.Ed. Specialist
Principal Coordinators	2.0	2.0	OTQRC + Sp.Ed. Specialist, Principal
2.4 Consultants and Special Education Resource Teachers	25	25	OTQRC + Sp.Ed. Specialist or equivalent
2.5 Care and/or Treatment Programs, Custody and Correctional Facilities Liaison	0.5	0.5	OTQRC + Sp.Ed. Specialist or equivalent
3. Educational assistants in special education			
3.1 Educational assistants	900.5	967.5	DSW, CYW, EA or equivalent

4. Other professional resource staff (Elementary)			
4.1 Psychologists (excluding chief, senior psychology associate and coordinator of behaviour programs)	33.1	33.1	Ph.D. or M.A. registered
4.2 Psychometrists	15.3	15.3	Ph.D. or M.A.
4.3 Psychiatrists	0.025	0.025	M.D., A.B.A.P. Fee for Service
4.4 Speech-language pathologists (excluding chief)	48.9	48.7	Graduate degree in Speech and Language pathologist registered
4.5 Audiologists	0.6	0.6	Fee for service
4.6 Occupational therapists	0.25	0.25	Fee for service
4.7 Physiotherapists	0	0	
4.8 Social workers (excluding chief)	41.0	41.0	BSW or MSW-Registered
4.9 Subtotal	1772.5	1806.8	
5. Paraprofessional resource staff			
5.1 Orientation and mobility personnel	0.5	0.5	Fee for service
5.2 Oral interpreters (for deaf students)	0	0	
5.3 Sign interpreters (for deaf students)	0	0	
5.4 Transcribers (for blind students)	0.5	0.5	
5.5 Interveners (for deaf-blind students)	1.0	1.0	
5.6 Auditory-verbal therapists	0	0	
5.7 Subtotal	2.0	2.0	

Secondary Panel

Special Education Staff	FTE 2009- 2010	FTE 2010- 2011	Staff Qualifications
1. Teachers of exceptional students			
1.1 Teachers for resource-withdrawal programs (GLE, CON, ZIS)	119	120.33	OTQRC + Minimum Sp.Ed. Part I
1.2 Teachers for self-contained classes	103.0	106.15	OTQRC + Minimum Sp.Ed. Part I (or Head with Special Education qualifications)
1.2 Teachers for partially integrated classes	25	26.33	OTQRC + Minimum Sp. Ed. Part I (or Head with Special Education qualifications)
1.3 Teachers Care and/or Treatment Programs, Custody and Correctional Facilities	45	45.0	OTQRC
2. Other special education teachers			
2.1 Itinerant teachers	6.0	7.0	<u>ASD/SN</u> -OTQRC + Minimum Sp.Ed. Part I <u>Deaf/Hard of Hearing</u> - OTQRC + Minimum Part 1 Specialist in Deaf Education <u>Blind/Low Vision</u> - OTQRC + Minimum Part 1 in Blind/Low Vision Education
2.2 Teacher diagnosticians	0	0	
2.3 Coordinators	1.0	1.0	OTQRC + Sp.Ed Specialist
2.4 Consultants and Resource Teachers (Special Education)	5.0	5.0	OTQRC + Sp.Ed Specialist
2.5 Care and/or Treatment Programs, Custody and Correctional Facilities Liaison	0.5	0.5	OTQRC + Sp.Ed Specialist

3. Educational assistants in special education			
3.1 Educational assistants	368.0	406.0	DSW, CYW, EA or equivalent
4. Other professional resource (Secondary)			
4.1 Psychologists (excluding chief, senior psychology associate and coordinator of behaviour programs)	8.1	8.1	Ph.D or M.A. Registered
4.2 Psychometrists	3.5	3.5	Ph. D or M.A.
4.3 Psychiatrists	0.05	0.05	M.D., A.B.A.P. Fee for Service
4.4 Speech-language pathologists (excluding chief)	2.1	3.3	Graduate degree in Speech and Language Pathologist registered
4.5 Audiologists	0.4	0.4	Fee for service
4.6 Occupational therapists	0.25	0.25	Fee for service
4.7 Physiotherapists	0	0	
4.8 Social workers	16	16	BSW or MSW-Registered
4.9 Subtotal	702.90	748.91	
5. Paraprofessional resource staff			
5.1 Orientation and mobility personnel	0.5	0.5	Fee for service
5.2 Oral interpreters (for deaf students)	0	0	
5.3 Sign interpreters (for deaf students)	0	0	
5.4 Transcribers (for blind students)	0.5	0.5	
5.5 Interveners (for deaf-blind students)	1.0	0	
5.6 Auditory-verbal therapists	0	0	
5.7 Subtotal	2.0	1.0	

12. STAFF DEVELOPMENT

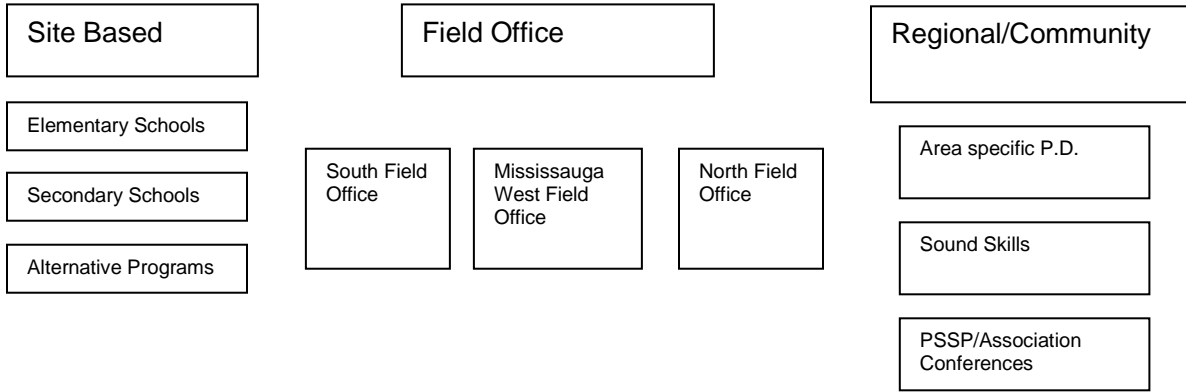
Purpose of the standard:

To provide details of the board's professional development plans for special education staff for the ministry and to the public

What you will find in this section:

- ways staff provide input for the plan and methods of determining priorities
- ways the board's SEAC is consulted about staff development
- Special Education Staff Development plan (courses, in-service training, and other types of professional development activities offered by the board)
- ways staff are trained with regard to the legislation and ministry policy on special education, with particular training for new teachers
- details of the board's budget allocation dedicated to the staff development plan in the area of special education
- ways school board staff are made aware of the board's special education plan and of professional development opportunities
- cost-sharing arrangements with other ministries or agencies for staff development

Special Education Staff Development



Ways in Which the School Board's SEAC is Consulted and Informed About Staff Development

- monthly meetings provide an opportunity for regular feedback to special education staff and sharing of current professional development opportunities
- individual meetings and dialogues between SEAC members and administration
- tracking of issues and concerns consistently raised at SEAC meetings
- feedback from attendance at board wide professional development sessions.

Special Education Staff Development Plan (courses, in-service training, etc.)

The board focus for professional development is developed by the Curriculum, Instruction, Special Education Support Services Department with a focus on literacy and numeracy.

- literacy and numeracy
- development of instructional intelligence

In addition the Special Education Support Services department works closely with other departments in pursuing professional development. These departments include, Staff Development and School Support Services, Curriculum Instruction Support Services, Communication Support Services and Learning Technology Support Services.

System Focus

Literacy/Numeracy
 First Steps®, Stepping Out®, ONAP, ELL and Special Education Collaboration

Ongoing teacher training and support for implementation. Early literacy and numeracy resource teachers support teachers at the classroom level. There is a focus on assessment for learning using First Steps, Stepping Out, CASI, Alpha Kids and ONAP to develop high yield, instructional strategies.

Ways in Which the School Board Staff are Made Aware of the Board's Special Education Plan and Staff Development Opportunities

- My Learning Plan
- system calendar
- administrator in-service
- flyers to schools
- special education teacher meetings
- Curriculum, Instruction, Special Education Support Services Learning Team meetings
- personal phone calls and/or e-mail
- monthly SEAC meetings
- weekly meetings of senior administration
- Peel District School Board web site
- staff meetings
- CISESS advisory committee
- Educational Resource Facilitators website and newsletter
- Links to Web page (Special Education (Heads, SERTs/Secondary Resource Teachers-Special Education and Special Programs)

STAFF DEVELOPMENT LEARNING OPPORTUNITIES

2010-2011	Professional Development Topic
July	<ul style="list-style-type: none"> • AODA Customer Services Training
August	<ul style="list-style-type: none"> • Summer Institute for New Teachers • Training for teaching teams of students with ASD and DD in contained programs • One day training session for new and returning teachers, BTA's of elementary interval/contact programs • TEACCH Training • New consultant in-service • Geneva Centre Summer Institute
September	<ul style="list-style-type: none"> • Secondary teachers of Special Education- in-service • ISSP Teachers- In-service • New Heads with Special Education Responsibilities- in-service • IEP training and ongoing follow up as required • KTEA training • Critical Incident In-service • Reporting Child Abuse In-service • In-service for staff working with Developmental Disabilities and ASD (beginning of monthly network meetings) • New SERT training • In-service for staff working with Deaf and Hard of Hearing • In-service for staff working with Special Programs IPRC chairs • In-service for intermediate contact program staff (1/2 day) • PPI training for staff in KSP, contained/interval/contact program, intermediate and secondary contact program (full day or two) • Sound Skills: Introduction to Kindergarten • Psychology In-service at Organizational Meeting • Teaching Assistant modules • One day training session for interval/contact class teachers and BTAs • Learning for All (ongoing) • Speech-Language in-service at organized meeting • Network for Teachers of ASD and DD classes • Tourette Syndrome National Conference
October	<ul style="list-style-type: none"> • IPRC Chairs meeting • In-service training for teachers of communication and enhanced learning classes • Speech and Language Pathologist in service at organized meeting • DD network PD meeting • Secondary/elementary mobile behaviour support team workshop • Sound Skills: Introduction to Grade One

	<ul style="list-style-type: none"> • Social Work Symposium • Teaching Assistant modules and workshops 4 half days • Speech And Language Pathologist Annual Conference
November	<ul style="list-style-type: none"> • Suicide Intervention Training • In-service for teachers of GLD classes • Transitions to Post Secondary – workshop for students • In-service for administrators • Psychological Assessment Tools • In-service seminar for Secondary School Educators • Teaching Assistant Modules and Workshop • SERT training in assistive technology • Network for Teachers of DD and ASD classes • Speech-Language pathology Meeting • KIP regional planning and in-service meeting
December	<ul style="list-style-type: none"> • Critical Incident In-service • Transition workshops for grade 8 teachers: <i>Going From Grade 8 to Grade 9: What Supports are Available?</i> • In-service for teachers of behaviour programs • Teaching Assistant modules/workshops
January	<ul style="list-style-type: none"> • In-service Assistive Technology for special needs accommodations for provincial assessments. • ISSP teacher in-service • Think Bowl information session • Network for teachers of DD and ASD classes • Case Studies/focussed discussion of risk in students • Annual Review training • Secondary contact teachers and BTA workshop • Secondary/Elementary mobile behaviour support team workshop
February	<ul style="list-style-type: none"> • ISSP Institutes • IEP in-service • Information session CAS/group home personnel • Annual review training for SERTs, Secondary Resource Teachers-Special Education and teachers • Teaching Assistant workshops Transition Planning workshops for intermediate students with ASD • Network for Teachers of DD classes-North and South program • KSP teams planning and in-service • KIP Regional meeting • half day elementary and secondary mobile in-service
March	<ul style="list-style-type: none"> • Critical Incident In-service • Teaching Assistant modules and workshops
April	<ul style="list-style-type: none"> • Suicide Intervention Training • Parent Literacy Workshop (social skills) • Annual Social Work Conference

	<ul style="list-style-type: none"> • Workshop on EPPP Examination • Psychology Seminar for administrators – focussed discussion of Risk in Students • In-service for teachers of behaviour programs • Network for Teachers of DD and ASD classes • Speech And Language Pathologist Spring Conference
May	<ul style="list-style-type: none"> • Annual School Psychology Conference • half day elementary behaviour mobile in-service • Administrators of Intermediate Contact Programs • Intermediate Contact Program staff and PSSP • TA modules and workshops • Annual Review training for teachers at Parkholme School
June	<ul style="list-style-type: none"> • Annual Speech and Language Conference • Teaching Assistant modules and workshops • Secondary Contact Programs Workshop • Secondary/Elementary Mobile Behaviour Support Team workshop

**Events
Scheduled
Monthly**

- Field Office School Success Team Meetings
- Care and/or Treatment Programs, Custody and Correctional Facilities staff meetings
- Speech And Language Pathologist staff meetings
- Special Education Department Meetings
- Social work staff meetings
- Psychology staff meetings
- Secondary Heads with Special Education responsibilities
- Special Education Resource Teacher/Consultant meetings
- Secondary Resource Teachers-Special Education meetings
- CISESS Learning Team Meetings (once monthly)
- Psychology Clinical Issues Meetings
- in-service sessions for staff of mobile behaviour support teams
- ASD Resource Team meetings
- Monthly itinerant staff meetings
- half day training session for mobile behaviour support team. Case managers, BTAs, teachers (elementary and secondary)
- half day behaviour mobile workshop-elementary and secondary
- In-service at Care and/or Treatment Programs, Custody and Correctional Facilities host school sites to support school success planning
- Special Education Resource Teachers meetings
- Secondary Department Heads with Special Education Responsibilities

General Events

- Anti-bullying initiative
- Staff development opportunities offered to Behaviour Teaching Assistants from psycho-educational consultants
- Book and video talks
- Positive school climate development
- Training for the revised operating procedure for High Risk Students
- Training for assistive technology and software applications
- Incorporating assistive technology into the curriculum
- Ongoing training offered to Board staff from Special Programs, ASD Resource Team and Erinoak School Support Program
- Incorporating methods of ABA and transition planning in programs for students with special needs
- Combined Consultants/SERTs meeting-twice yearly
- Collaborative interdepartmental (Special Education, Curriculum and Alternative) professional development inservicing professionals supporting students who are at risk
- Bi monthly inservice to reflect PDSB system priorities and policies/directions/initiatives by Ontario Ministry of Education Care and/or Treatment Programs, Custody and Correctional Facilities branch
- PD for Shared Solutions

Staff Development Budget for Special Education	2009-2010	2010-2011
Staff Development for PPM 140 (Ministry-Fund 3)	\$288,000	\$294,987
Conference fees, supply teachers for release time, honorariums	\$70,000	\$70,000
Writing Teams	-	-
Speaker Fees and Materials	\$50,000	\$50,000
Behaviour Delivery Model	\$14,000	\$14,000
	\$15,000	\$15,000
Total	\$437,000	\$443,987

In addition to this dedicated budget, Special Education Resource Teachers/Consultants provide ongoing staff development around all issues connected with Special Education.

Cost Sharing Arrangements

Where feasible the board enters into agreements to facilitate staff development. A number of agencies and institutions have partnered with the board in this area. They include:

- Trillium Health Centre
- Geneva Centre for Autism
- Peel Children's Centre
- Ministry of Education –SEA and ISA4
- Ministry of Children and Youth Services
- Success by 6
- Ministry of Colleges and Universities
- York University
- Brock University
- Sheridan College
- Humber College

15. TRANSPORTATION

Purpose of the Standard:

To provide details of the board's transportation policies to the ministry and to the public.

What you will find in this section:

- description of the types of students with special needs who are eligible to receive transportation and the ways in which these students can access the transportation
- students in special education programs, including students who are in regular classrooms
- students in educational care and treatment, and correctional facilities
- students attending Provincial and Demonstration Schools
- students who require transportation in order to attend summer school programs
- process for deciding whether a student with special needs will be transported with other children or whether it is in the best interests of the student to be transported separately
- safety criteria used by the board in tendering and the selection of transportation providers for exceptional students

Types of Students with Special Needs Eligible for Transportation and Access

Types of students/transportation	Ways to Access
Students in special education programs	<ul style="list-style-type: none"> • Special Education Resource Teachers (SERTs) forward approved lists of students identified to special education programs to the Student Transportation Department • All identified students are considered eligible for transportation where the special class placement is in a school different from their home school and beyond the distance guidelines • A specific identified need may warrant transportation regardless of distance
Students in mainstream placements	<ul style="list-style-type: none"> • Consultants forward approved lists of students identified to special education programs to the Student Transportation Department • All identified students are considered eligible for transportation where the special class placement is in a school different from their home school and beyond the distance guidelines • A specific identified need may warrant transportation regardless of distance
Students in educational care and treatment	<ul style="list-style-type: none"> • Specific requirements and details regarding the student and service requirements are received from Care and/or Treatment Programs, Custody and Correctional Facilities co-ordinator • Service is provided utilizing either contracted mini van or taxis • Transportation to care and treatment facilities are maintained during the summer months for those students approved and designated as 12 month attendees
Students attending Provincial and Demonstration Schools E. C. Drury 52 Trillium 5 W. Ross MacDonald 13	<ul style="list-style-type: none"> • Provincial Schools provide a list of students, from PDSB who are enrolled in the Provincial School • Transportation staff designs a segregated route system for both daily and weekly residential students • Communication is directly with parents regarding pick up and drop off times as well as necessary adjustments • Revisions to student data and new or deleted student information is received from the Provincial school on an ongoing basis

	throughout the school year
Students who require transportation in order to attend summer school programs	<ul style="list-style-type: none"> No transportation service is provided for secondary students attending summer school Elementary summer school (Grade 7 and 8) students are provided with bussing to the designated summer school site from the neighbourhood school Centralized stops, located only at schools, are established for this service and route information is provided to all schools prior to the end of June Students are required to get themselves to the centralized stops Exceptions to this apply only in the case of students with physical disabilities or exceptional rural circumstances
<ul style="list-style-type: none"> 20 passenger van 5 passenger mini van wheelchair accessible vehicle taxi regular school bus 	<ul style="list-style-type: none"> Decisions about type of vehicle are made collaboratively with the involvement of any or all of the following: <ul style="list-style-type: none"> SERT/Consultant Co-ordinator School personnel Parents Superintendent Transportation officers

Safety Criteria

Wheelchair Service	<ul style="list-style-type: none"> all vehicles used comply with all regulations, including wheelchair securement processes and devices drivers are specifically selected for this service based on experience, personality and driving record
Driver Training	<p>Each company trains their staff with respect to the transportation of students with special education needs. The following outlines the training provided:</p> <ul style="list-style-type: none"> all drivers require a criminal record check companies provide training on an individual needs basis to drivers transporting students with special needs all companies train their drivers on the use of epi-pens companies provide on going training throughout the school year in areas such as evacuation, student behaviour, etc.

